



Access Control



From ADEMCO Commercial Systems Division – the world’s leading designer and manufacturer of electronic commercial security systems – comes a new access control system. PassPoint™. Smart. Simple. Secure.

Connectivity is key. PassPoint utilizes the unique power and performance of LonWorks® networking technology. Easily expandable, PassPoint Access Control Systems readily adapt to the changing needs of its host business.

From one point of access to 128 – PassPoint goes the limit. Designed for simplicity of installation and operation, systems are pre-configured and interface with compatible Vista intrusion systems. Rich software features enhance and support a full range of on and off-line functions.

Networking with LonWorks

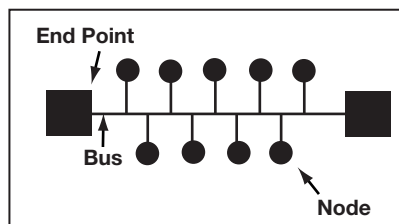
Echelon’s patented LONWORKS networking technology is the key to PassPoint’s connectivity. With a speed of 78 Kbps, LONWORKS gives PassPoint the capacity to expand with ease and the power to outperform its competition. In fact, 1500 feet of unshielded, twisted pair cabling takes you anywhere and everywhere you need to go – there are no rules. Designed to accommodate long wire runs, LONWORKS’ polarity-insensitive networking technology supports a fully open topology.

EASY CONNECTIVITY

Simplicity of installation with LonWorks® Network Wiring Connections:

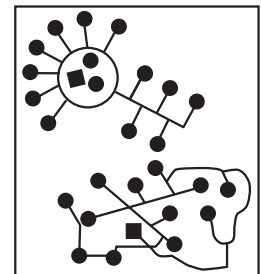
- Free topology wiring up to 150feet
- Up to 8000 feet using Bus configuration
- Fast 78Kbps data network speed
- All PassPoint nodes have Echelon chips
- Fast on-site hook-up and testing
- No special training required

LONWORKS BUS WIRING

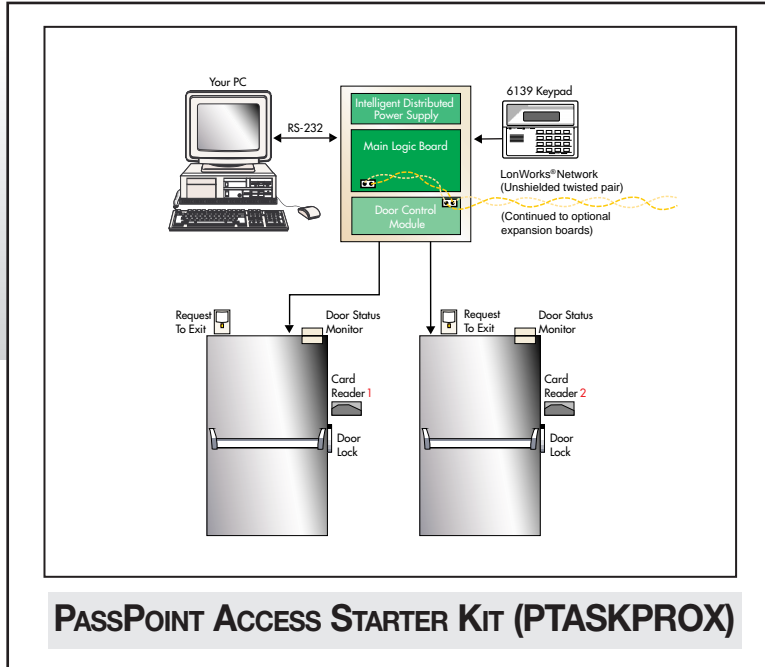


- Go up to 8000 feet using a Bus configuration
 - Use with dual end points
- Use 22AWG polarity insensitive, unshielded, twisted pair*

LONWORKS FREE WIRING



- Free topology wiring up to 1500 feet
 - Use in any node configuration, but with one end point
- Use 22AWG polarity insensitive, unshielded, twisted pair*



HOW TO ORDER:
 Use These Part #'s
PTASKPROX
 Note: A starter kit
 without readers and
 cards is also
 available.



Your starter kit contains the equipment you'll need to install and operate a one or two-door PassPoint Access Control System. PTASKPROX uses convenient, proximity type card readers and includes 50 cards. You have the option of purchasing additional sets of pre-encoded cards at any time. Installation and set-up is quick and easy with PassPoint *Express* Windows '95 based software. Follow the Quick-Start Guide to a successful installation of a two reader access control system. When you're ready to expand your system—our Door Expansion Kit (DEK) is all you'll need!



Access Starter Kit (PTASKPROX) Contains:

- 1 System enclosure - including cam-lock
- 1 Intelligent distributed power supply (PTDPSU)
- 1 Main logic board (PTMLB)
- 1 Door control module (PTDCM)
- 1 Wall transformer -18VAC - 50 VA (PTTRAN)
- 1 ADEMCO 6139 keypad/display
- 2 Card readers (proximity type)
- 50 Pre-encoded Prox cards
- 1 RS-232 cable for PC connection, six feet long
- 1 Passpoint *Express* Software Package
- 1 PassPoint System Quick-Start Guide

To complete the installation for PTASKPROX you will need:

Door Locks

- *Magnetic lock or electric strike

Cables

- *For power: 10 feet of two-conductor 18AWG wire
- *For card readers: five-conductor 18 - 22AWG stranded shielded wire
- *For door locks: two-conductor 16AWG wire suggested
- *For LonWorks Network-22AWG unshielded twisted pair

Battery

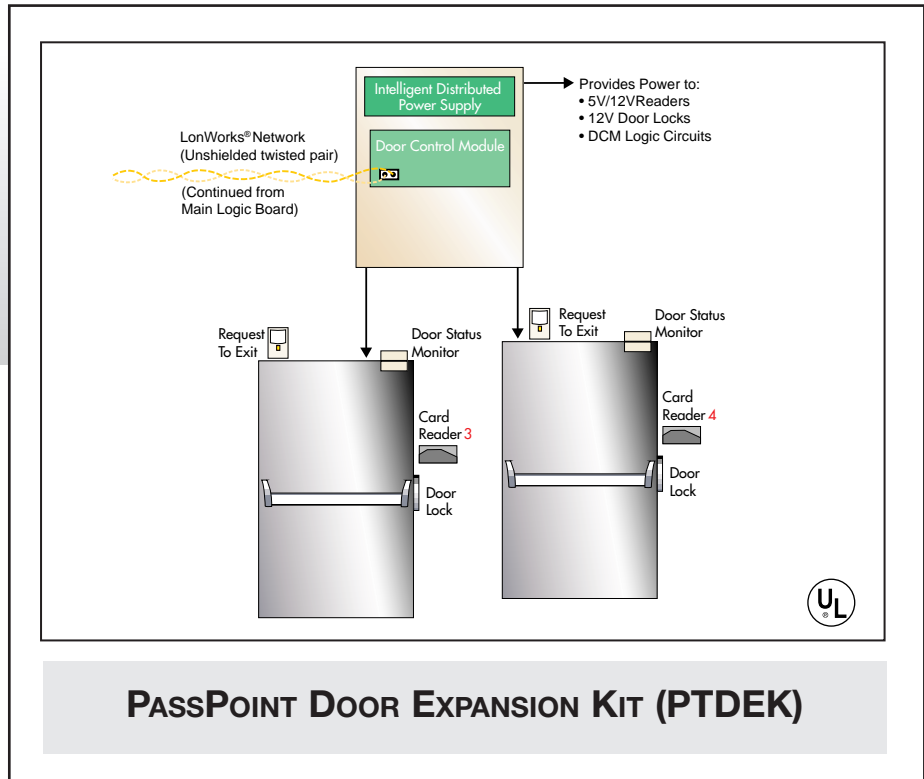
- *7AH

Other Optional Materials

- *Door contacts
- *Request to exit device

*These items are not included in Access Starter Kit

ACCESS CONTROL



Your expansion kit includes materials you'll need to expand your existing PassPoint Access Control System. Each single kit provides the basic equipment for an additional one or two-door installation.

HOW TO ORDER:
PTDEK
Extra Readers:
PTPROX
Extra Cards
PTPROX25
PTPROX50

Door Expansion Kit (PTDEK) Contains:

- One door control module (PTDCM)
- One system enclosure - including cam-lock with intelligent distributed power supply and wall transformer-18VAC - 50 VA (PTCANPOWER)

TO COMPLETE INSTRUCTIONS FOR PTDEK YOU WILL NEED: Cards and Card Readers

- One or two readers and additional cards (see How To Order table)

Door locks

- Magnetic lock or electric strike

Cables

- For power: 10 feet of two-conductor 18AWG wire
- For card readers: five-conductor 18-22AWG stranded shielded wire
- For door locks: two-conductor 16AWG wire suggested
- For LonWorks Network-22AWG unshielded twisted pair

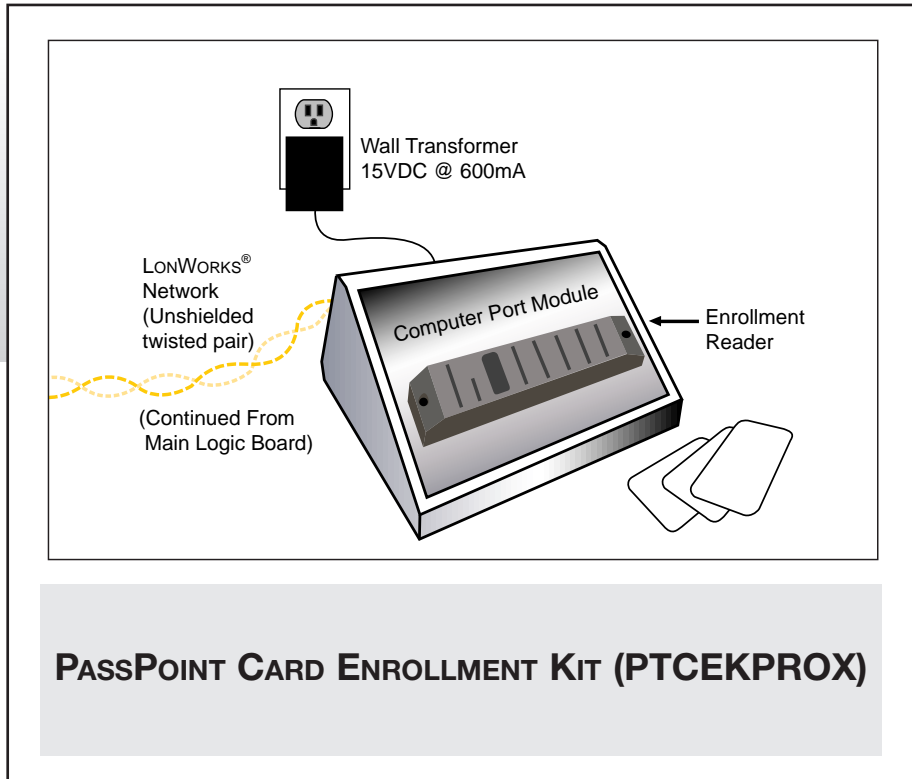
Battery

- 7AH

Other Optional Materials

- Door contacts (optional)
- Request to exit device (optional)





The enrollment kit has everything you'll need to equip your PassPoint Access Control System with card enrollment capabilities. This optional kit is a unique feature of Passpoint Systems and allows batch enrollment of cards. Card numbers are logged in the system by merely presenting the deck of cards to the enrollment reader.

Card Enrollment Kit (PTCEKPROX) contains:

- 1 Card enrollment cabinet with Prox reader
- 1 Wall transformer-15VDC @ 600 mA

To complete the installation, you will need:

Cable

- For LonWorks Network-22AWG unshielded twisted pair wire

HOW TO ORDER:
PTCEKPROX
Extra Cards:
PTPROX25
PTPROX50

**ACCESS
CONTROL**



PASSPOINT SOFTWARE

The PassPoint Access Control System may be operated either as a stand-alone (off line) or PC (on line) — depending on the preference of the user and the size of installation. Once the system has been configured using a PC, PassPoint is fully operational in the off-line mode. The system need only to be brought on-line for subsequent card enrollments, time schedule adjustments, or reporting.

OFF-LINE OPERATION

For low volume event-transactions or small installations where routine cardholder database maintenance is not required, the off-line operations mode may be ideal and extremely cost-effective. Each Access Starter Kit comes complete with PassPoint *Express* Windows '95 based software, which allows the system administrator to configure hardware, add/delete cardholders, upload system events and generate customized reporting — all with comprehensive, context-sensitive help.

ON-LINE OPERATION

For more demanding access control system installations, a PC may be used. In this scenario, the PC continuously runs PassPoint *Express* Windows '95 based software and allows visual monitoring of system activities. The PC may be used to run other Windows '95 applications.

The PassPoint Windows Software is a fresh interpretation on a classic graphical presentation. PassPoint *Express* Windows based software allows the system administrator to configure, monitor, control and report on all activities and resources in the system.

FEATURES & FUNCTIONS:

- True 32Bit software compatible with WIN95 and NT
- Graphical tree presentation of system architecture
- Control over all system resources by point and click functionality
- Full, custom and canned reporting suite
- Real-time monitoring of event transactions
- Wizard's simplify installation and set up
- Preset Databases allow immediate start up
- Auto control procedure for hardware modules

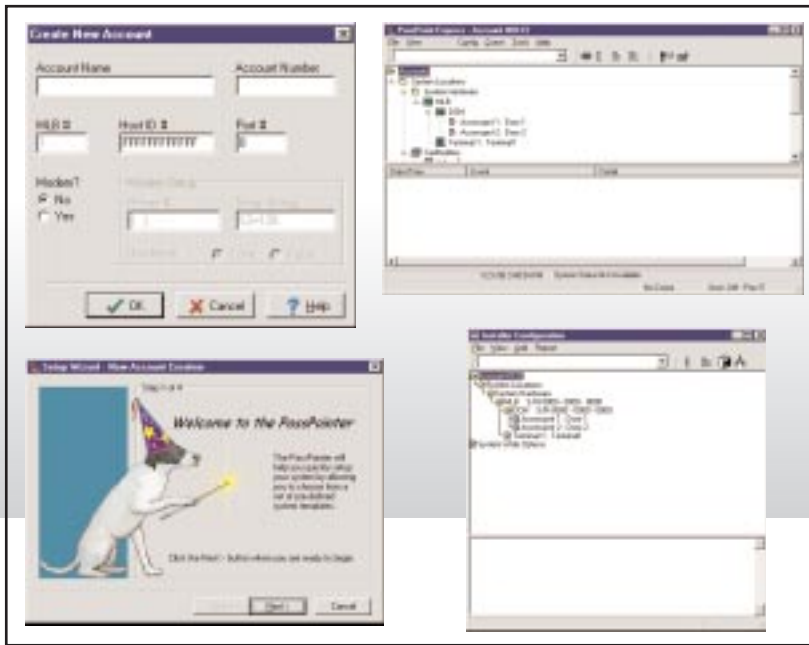
LISTINGS AND APPROVALS

Passpoint systems are listed by Underwriters Laboratories (UL) under UL294 for access control systems.

**How To Order:
PTACSWIN*
*Included in
Access Starter Kit**

MINIMUM SYSTEM REQUIREMENTS

IBM Compatible PC	Intel Pentium Processor 90 MHZ
Operating System	Windows 95
Memory	16 MB
Disk Space	20 MB hard drive space available



System Features

FEATURE	CAPACITY	DESCRIPTION
Cardholders	Basic: 2000 Expanded: 8000	A person who can be granted access through various points in a facility due to what they possess (a card), what they know (a pin number), or what they are (a fingerprint scan).
Events	Basic: 7000 Expanded: 30000	Some occurrence within the system caused by either physical or timetable generated activity.
Access Points	Basic: 32 Expanded: 128	Access Points may have a reader on both sides of a door to maintain the whereabouts of cardholders, or they may have a reader on only one side with an optional Request To Exit device on the other.
Unique Card Formats	up to 32	Card formats can be defined by actual bit-images of the badges being enrolled.
Unique Facility Codes	8	The system can use up to eight individual facility codes per site.
Remote Dial-Up Sites	up to 128	Establishment of a connection to a remote site via dial-up modems.
Command Station and/or Enrollment Readers	Basic: 12 Expanded: 128	A reader connected to the LonWorks network through a Computer Port Module for the purpose of controlling devices other than door locks, and/or enrolling new cards into the system.
Relay Outputs	Basic: 33 Expanded: 128	An electro-mechanical device providing a form C output that can be used to control external electrical/electronic equipment.
Trigger Outputs	Basic: 32 Expanded: 128	A solid-state digital switch that can be used to send low-level electronic signals to an external device as a result of an event in the PassPoint System.
Alarm Zone Inputs	Basic: 66 Expanded: 512	An electronic circuit capable of monitoring the security status of a facility through the connection of sensing devices.
Time Schedules	64	Each day may have up to eight start/stop intervals, called day templates. There are up to 20 User-Defined day templates, plus always and never, for a maximum of 22 day templates. Each of these day templates can be assigned to one of eight days of a schedule, and a maximum of 64 schedules can be defined within a system.
Computer ports	Basic: 2	For terminal or printer connections.
Holidays	32	These are days of the week which depart from the normal schedule.
Access Groups (up to five access groups per card holder)	128	Access Groups hold the details of which time schedules and through which access points individuals may pass if they are a member of the group.
System Administrators	21	These are a select group of people that have the responsibility of configuring and operating the PassPoint System, and reporting the data.



HOW TO ORDER PASSPOINT SYSTEMS

To get started, order the Access Starter Kit (PTASKPROX). Then you can increase the number of doors on the system by ordering Door Expansion Kits (PTDEK) and additional readers and cards.

SYSTEM KITS

<i>Part Number</i>	<i>Item</i>
PTASKPROX	Access Starter Kit with two Prox Readers, 50 Cards and software
PTDEK	Door Expansion Kit - DCM, Can, Power, cables, no readers and cards
PTCEKPROX	Card Enrollment Kit with CPM, Prox Reader, Transformer and case
PTCANPOWER	ADEMCO Can + PTDPSU, Transformer
PTCPM	Computer Port Module

NOTE: A STARTER KIT WITHOUT READERS AND CARDS IS ALSO AVAILABLE.

READERS AND CARDS

<i>Part Number</i>	<i>Item</i>
PTPROX	Proximity Reader
PTPROX25	Package 25 Prox Cards - Encoded

PTPROX50 Package 50 Prox Cards - Encoded

SYSTEM MODULES

<i>Part Number</i>	<i>Item</i>
PTMLB	Main Logic Board (MLB) Only
PTMLBX	MLB PC Board with 2MB Capacity
PTDCM	Door Control Module Board Only
PTKPAD	ADEMCO Keypad 6139 Display
PTCPB	Computer Port Board
PTQRM	Quad Relay Module Only
PTZIM	Zone Input Module Only
PTVGM	VISTA Gateway Module
PTDPSU	Distributed PS Board for System/Strikes
PTTRAN	120v/60Hz Plug In Class 2 Transformer, 18VAC, 50VA
PTTRANCPM	120v/60Hz Plug In Class 2 Transformer, 15VDC, 600mA

SOFTWARE

<i>Part Number</i>	<i>Item</i>
PTACSWIN1	Software Disks/License for Passpoint <i>Express</i> - hot basic system